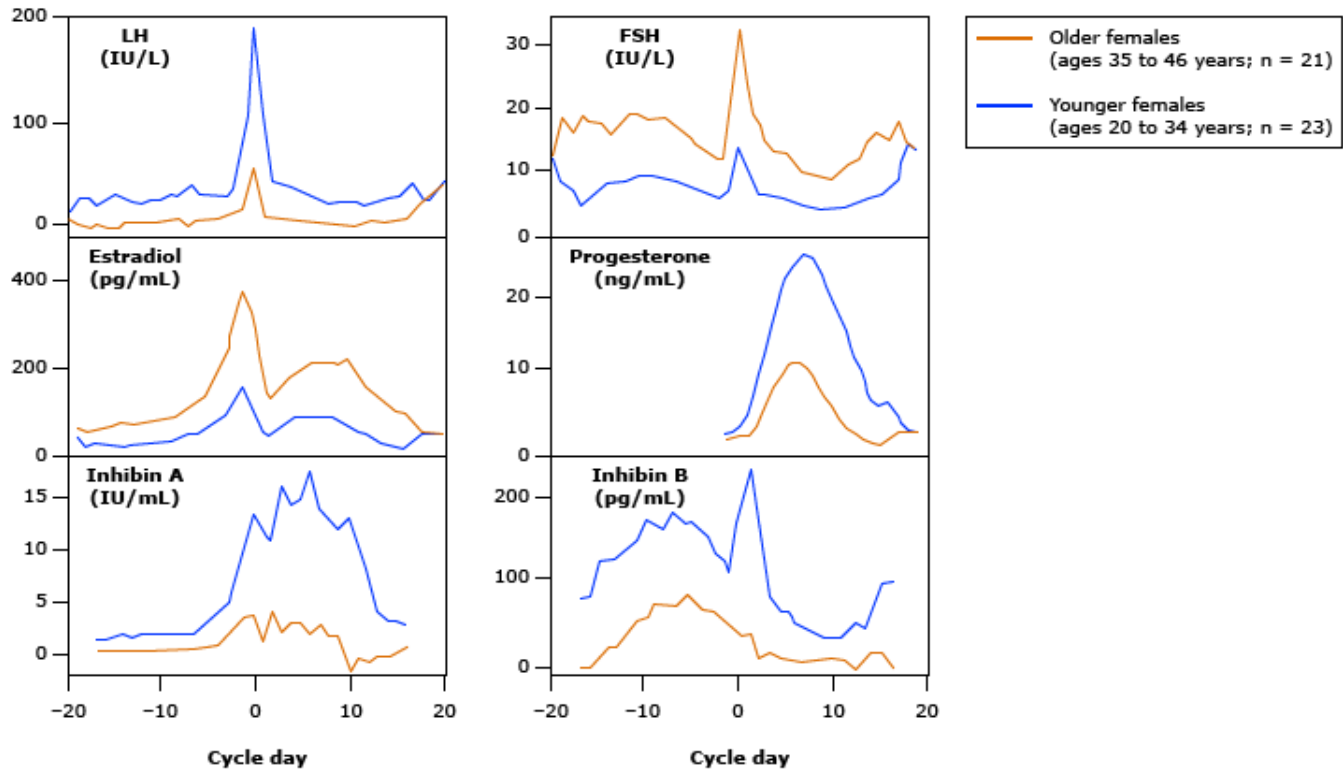


## Hormone levels: Older and younger reproductive age



Mean daily levels of gonadotropins, sex steroids, and inhibins in older (ages 35 to 46 years; n = 21), shown in orange, and younger females (ages 20 to 34 years; n = 23), shown in blue.

FSH: follicle-stimulating hormone; LH: luteinizing hormone.

*Adapted from: Welt CK, McNicholl DJ, Taylor AE, Hall JE. Female reproductive aging is marked by decreased secretion of dimeric inhibin. J Clin Endocrinol Metab 1999; 84:105.*

UpToDate®